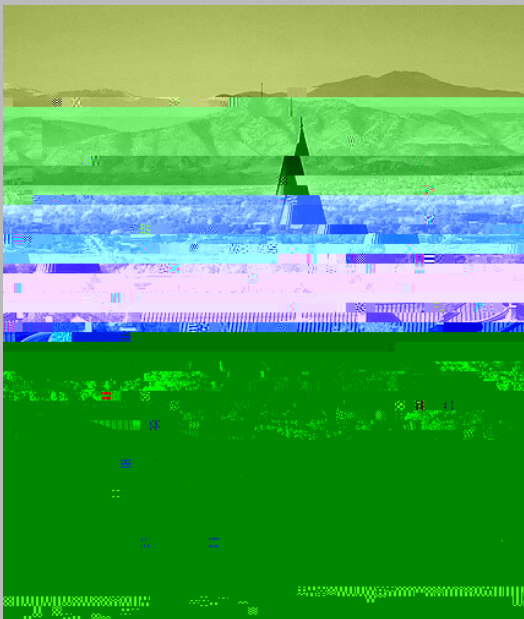


HELPING THE PEOPLE WHO HELP FAMILIES

Each and every day, child welfare caseworkers are working tirelessly to support and improve the well-being and safety of children and families. It's a tough job that entails long hours spent with families, seemingly endless paperwork, and ongoing effort to bring families together. Unfortunately, high job pressure, secondary traumatic stress, and burnout are common experiences among this segment of the workforce. This contributes to an annual rate of 20% to 40% in staff turnover and comes at a huge financial cost as well as disruption of family engagement whenever a worker leaves.

Through a five-year federal grant (2018-2023, \$4 million)

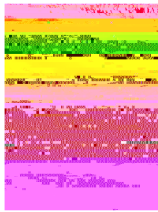
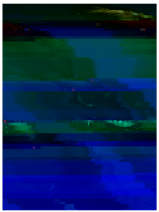


A MUSICIAN OF MANY COLORS

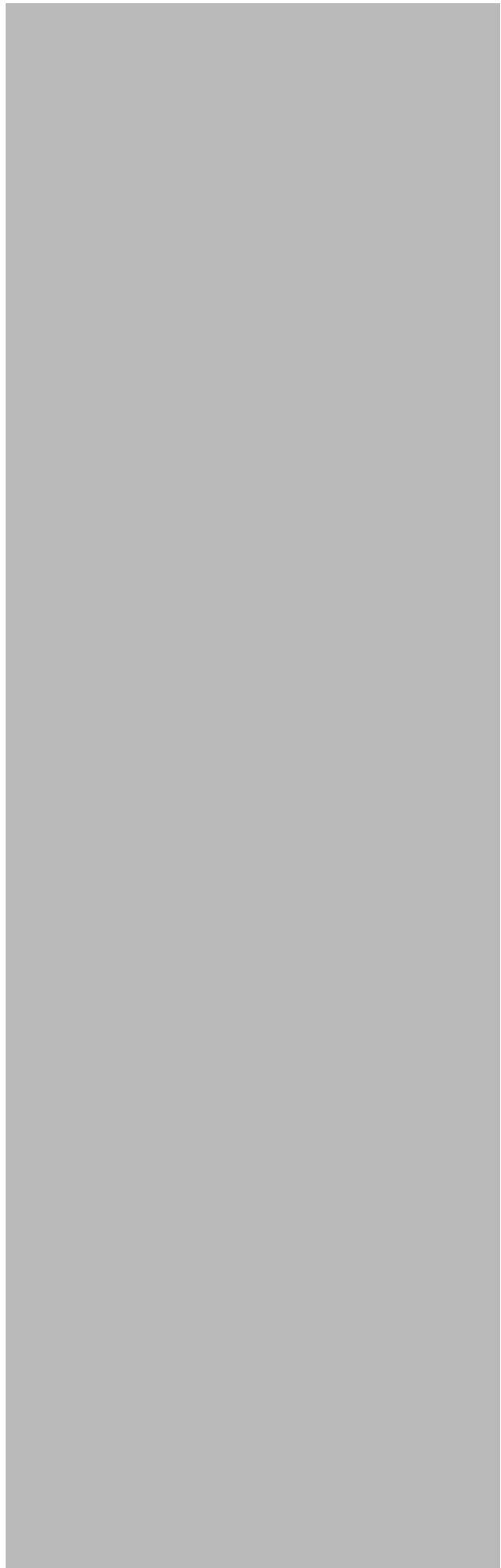
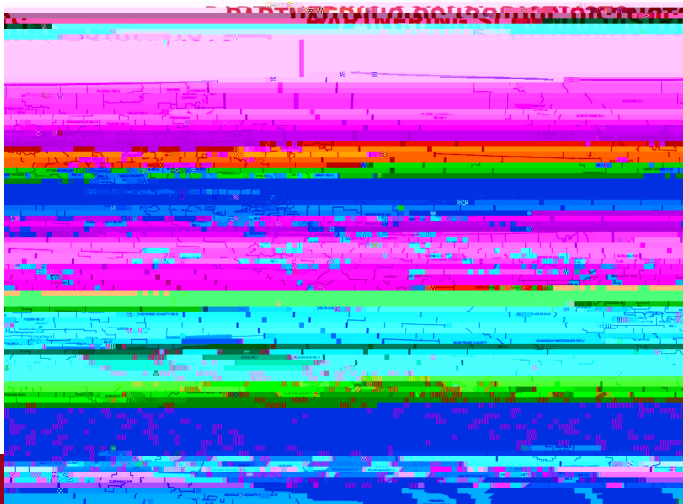
A conductor, a violist

To the University of Denver community,
Ilene Grabel is a professor and co-
director of the M.A. program in Global
Finance, Trade, and Economic
Integration at the Josef Korbel School of
International Studies.

MAKING IT HAPPEN

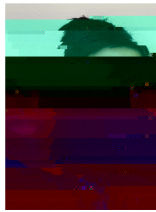
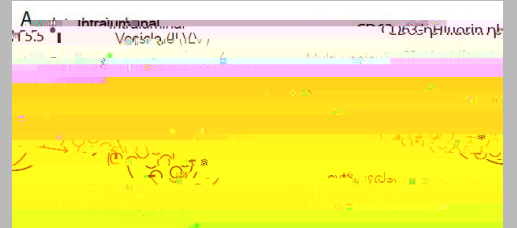


Health



GOING BEYOND THE MEMORANDUM

W



ABOUT THE PUBLICATION

Research and Scholarship Matters is a quarterly newsletter produced on behalf of the faculty of the University by the Interim Associate Provost for Research. Faculty with notable accomplishments or images suitable to the front panel of the next issue are encouraged to send them to Audry.LaCrone@du.edu. Not all submissions can be included, but every attempt will be made to be inclusive of all high quality research, scholarship and creative works.

Previous issues can be found

WANT MORE INFORMATION?